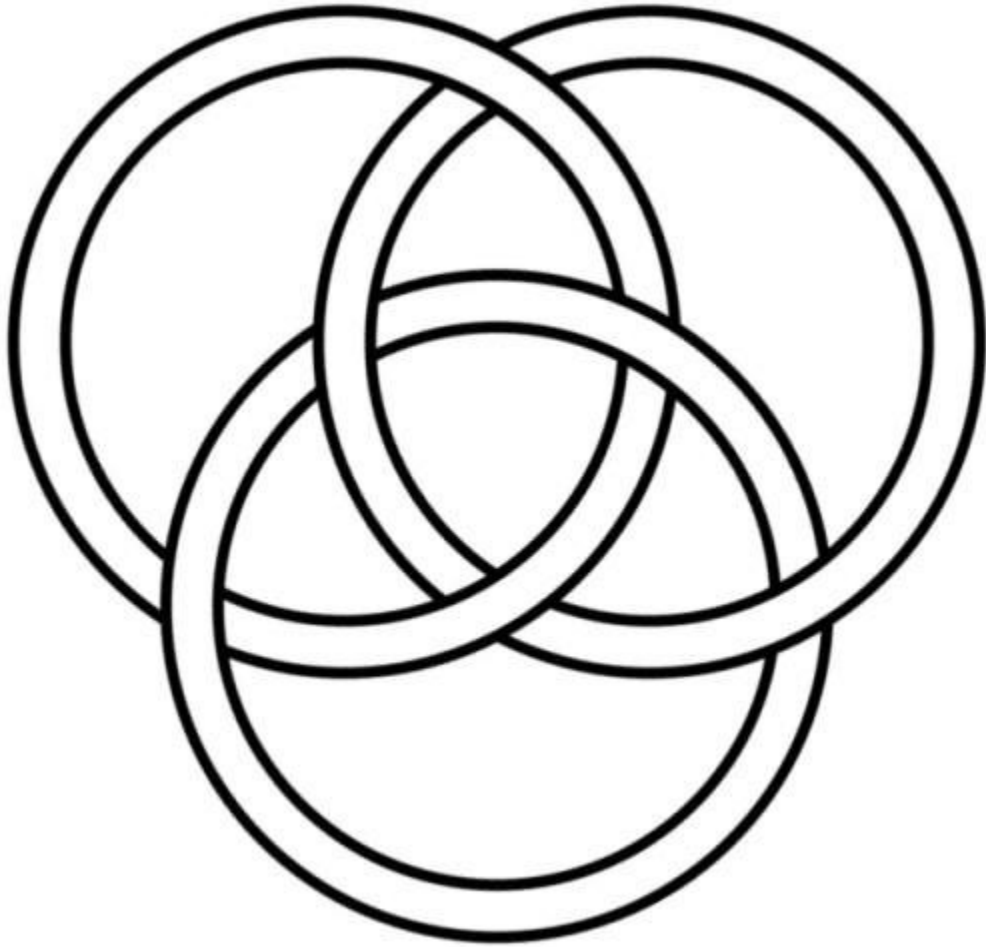


# Resonant Fields

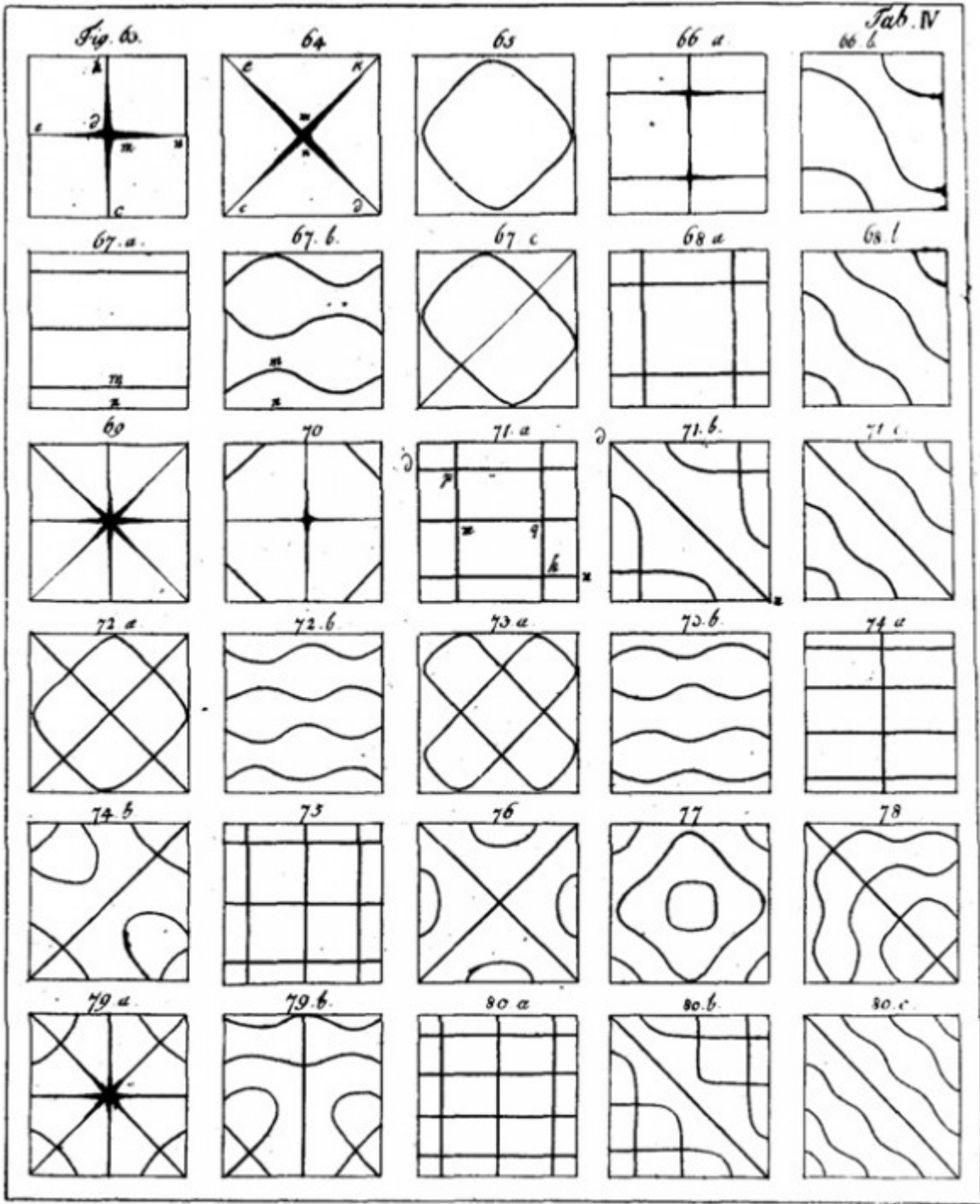
Jedi Simon



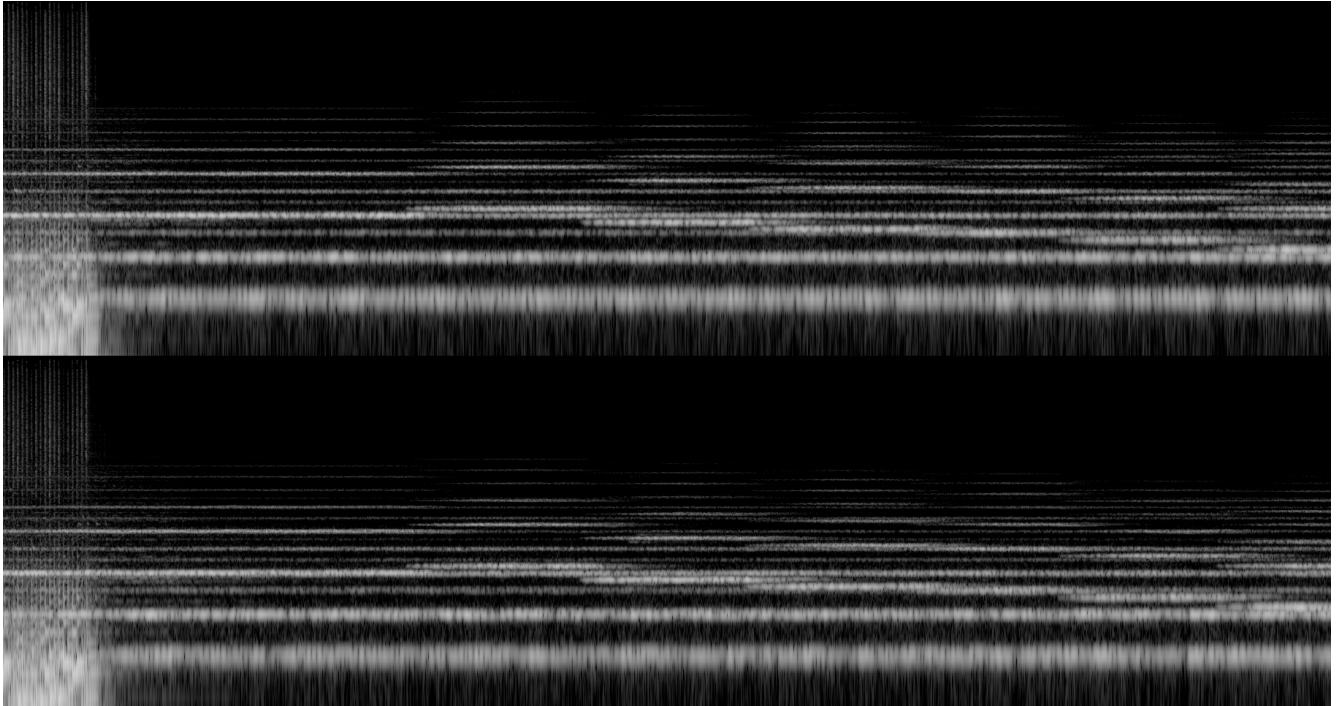
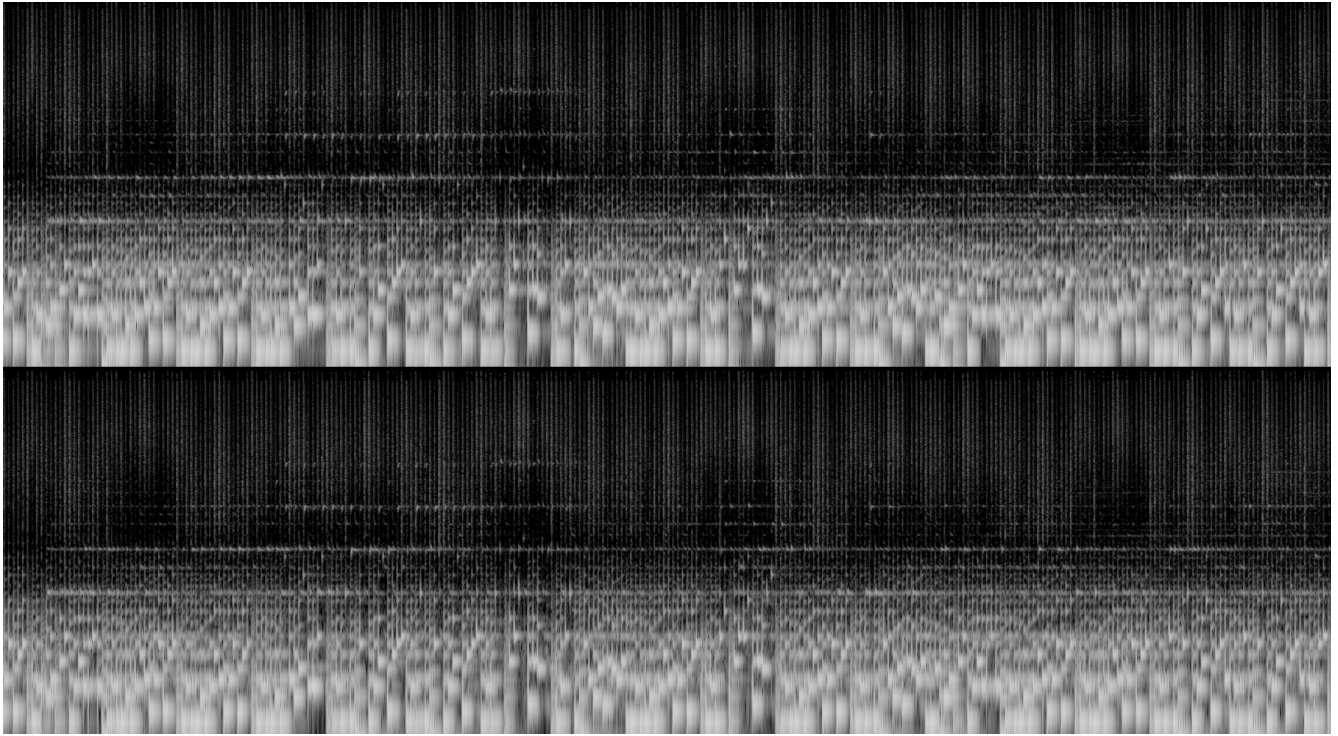
TRIQUETRA

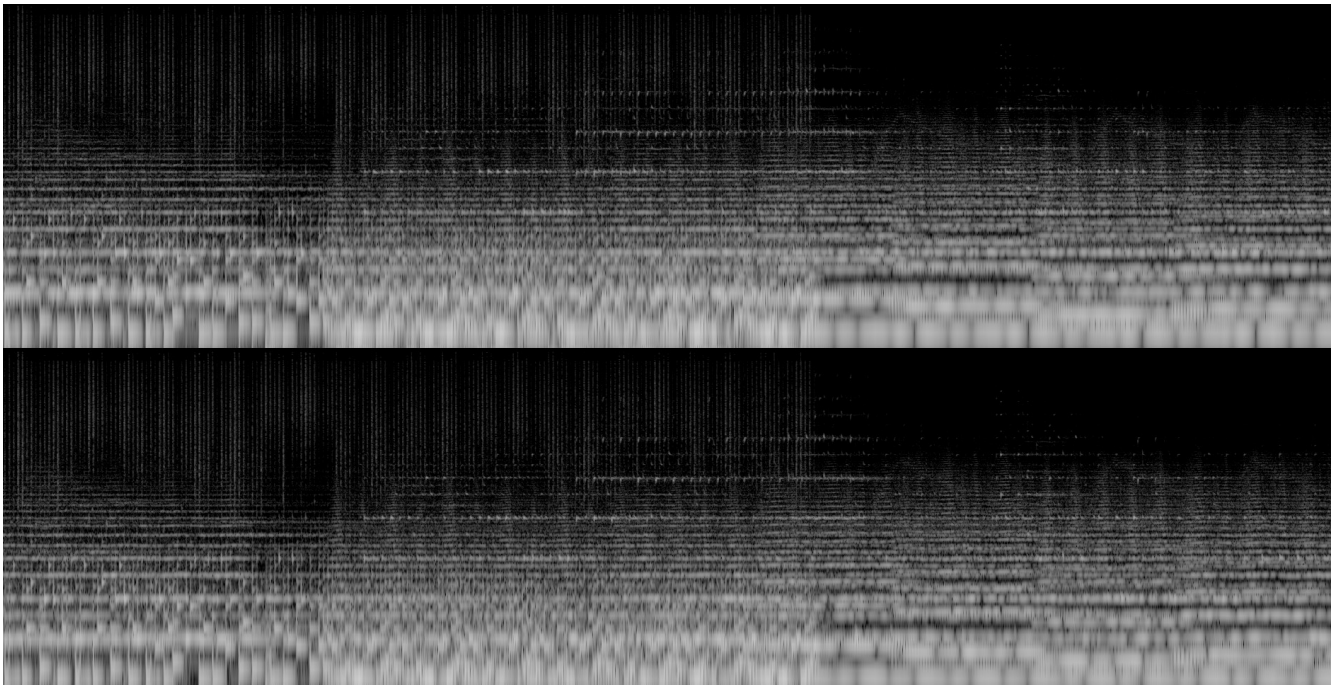
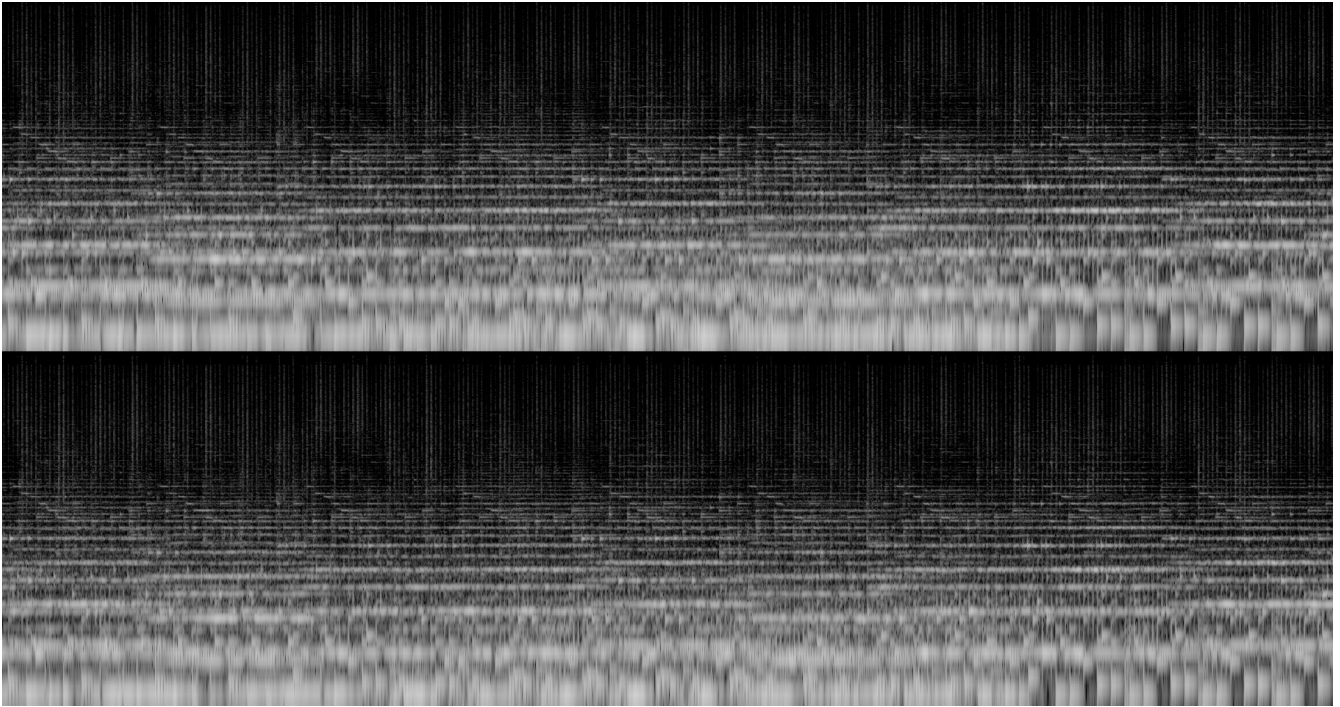


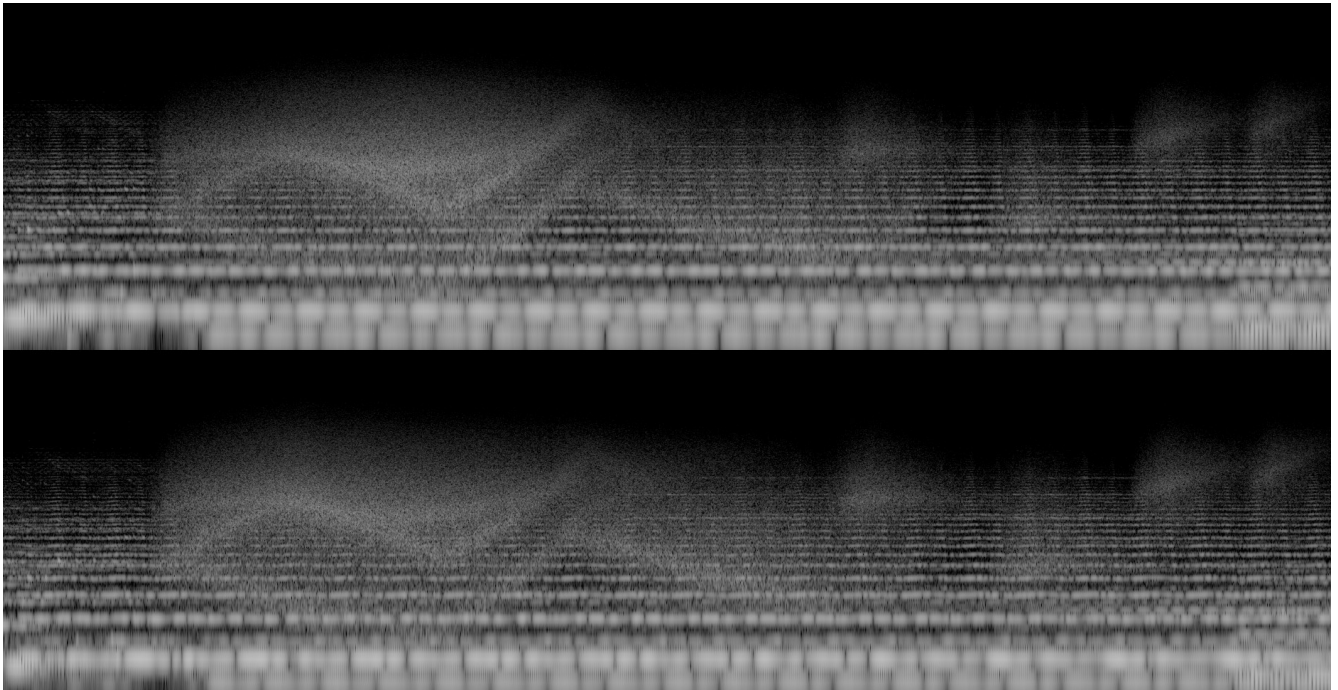
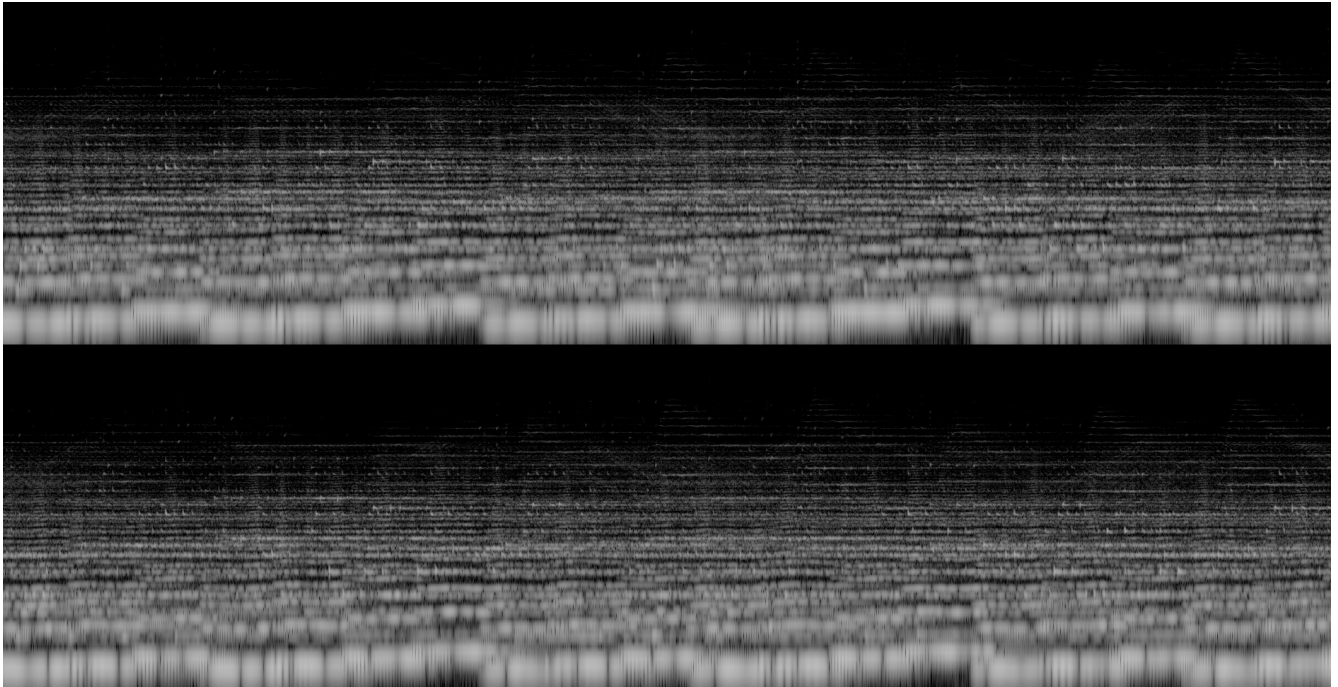
5 ELEMENTS

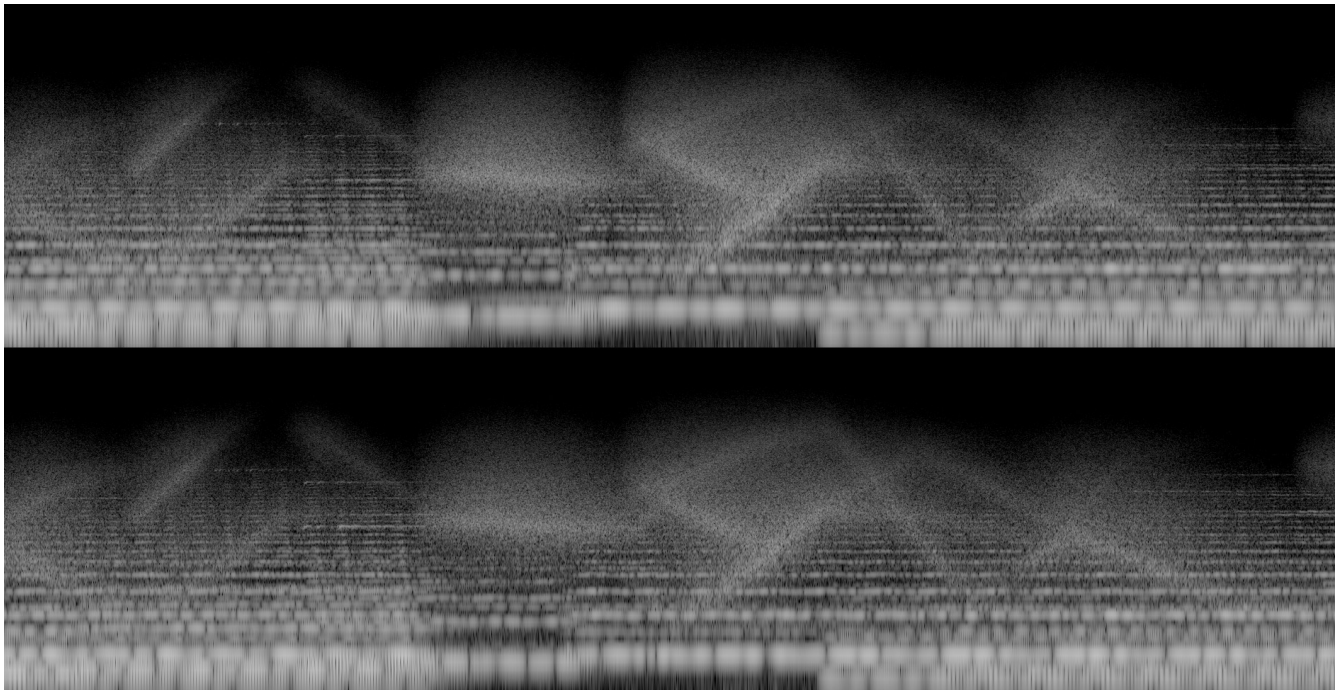
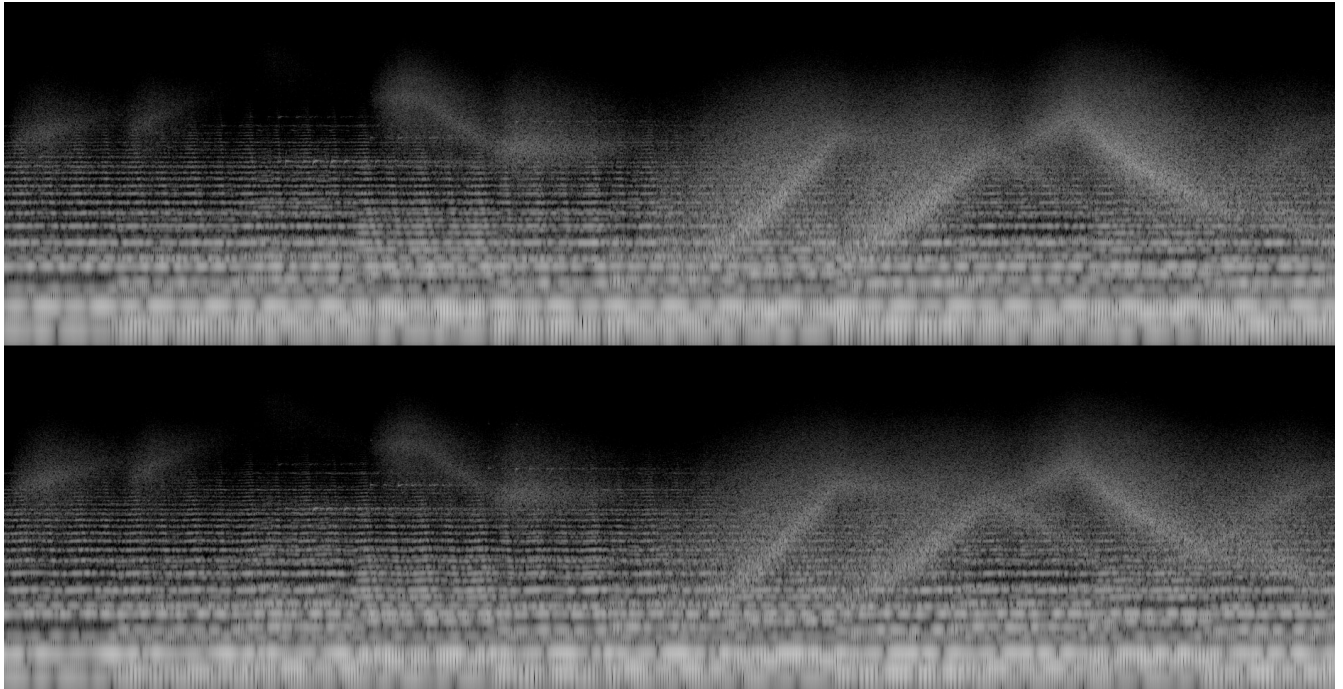


CYMATICS

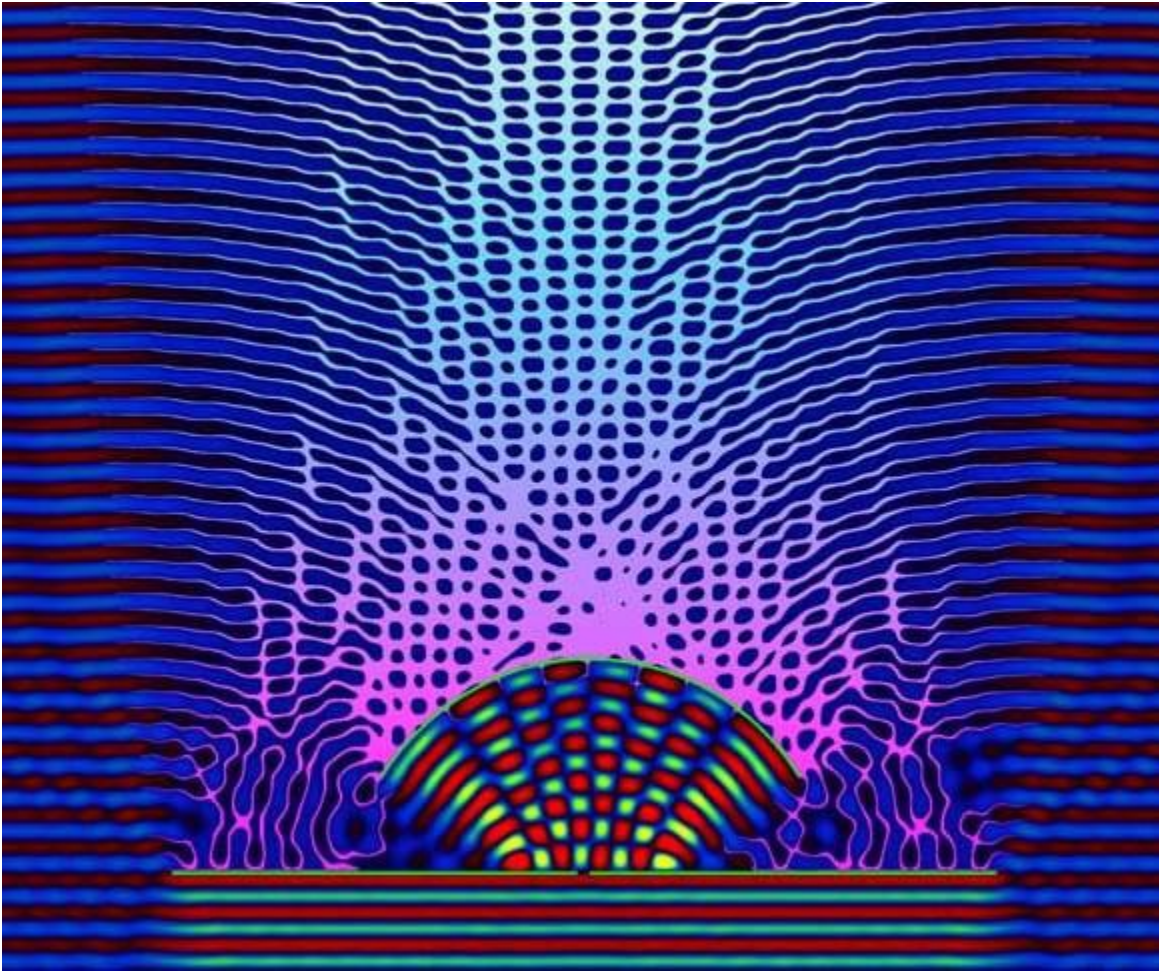






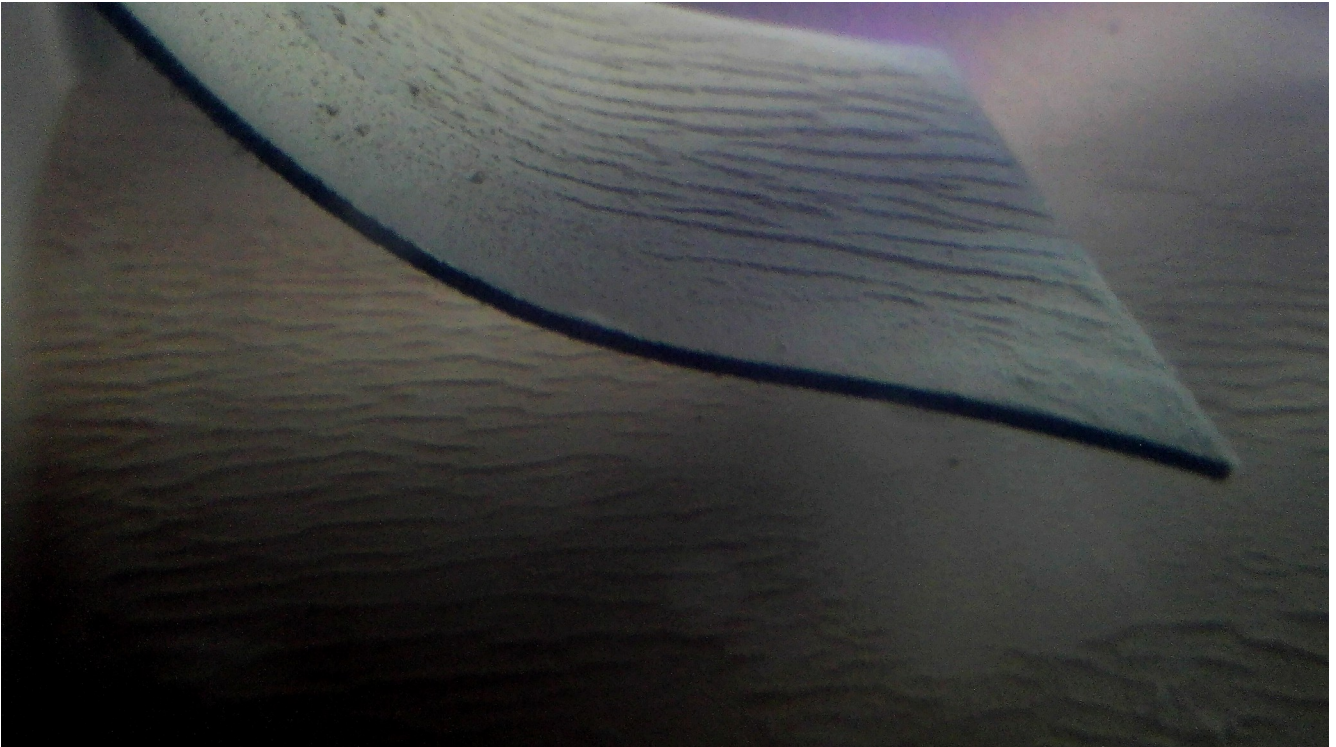


HARMONICAL AND SCALAR MUSIC



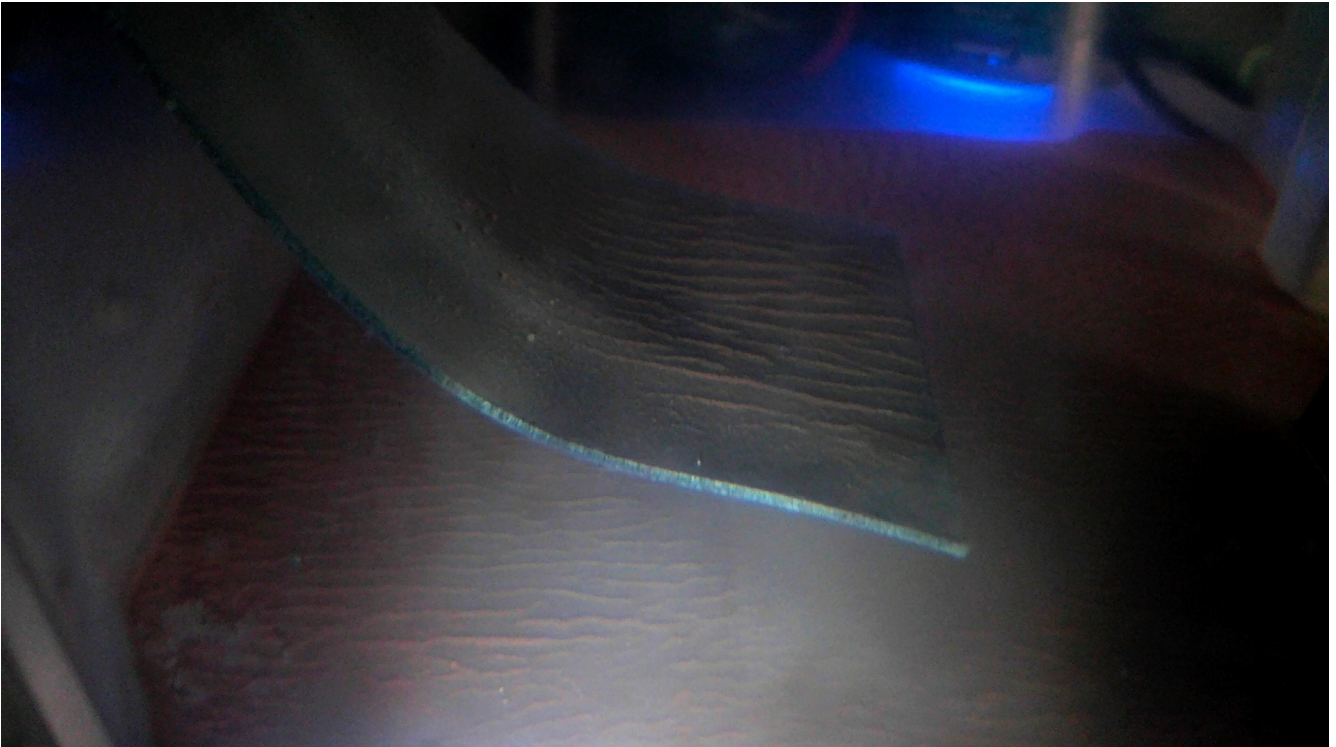
WAVE INTERACTION





HARMONIC AND SCALAR FLUXES GENERATED BY MUSIC  
USED TO CONFIGURATE ALCHEMIC FORMATIONS AND  
POSITIONING OF GANS. LOOK AT THE WATER. PURITY AND  
ORDERED MANIFESTATION.

CYMATIC WAVE FREQUENCY "CARESS" INTRODUCED TO  
PRODUCE MATTER CONFIGURATION.

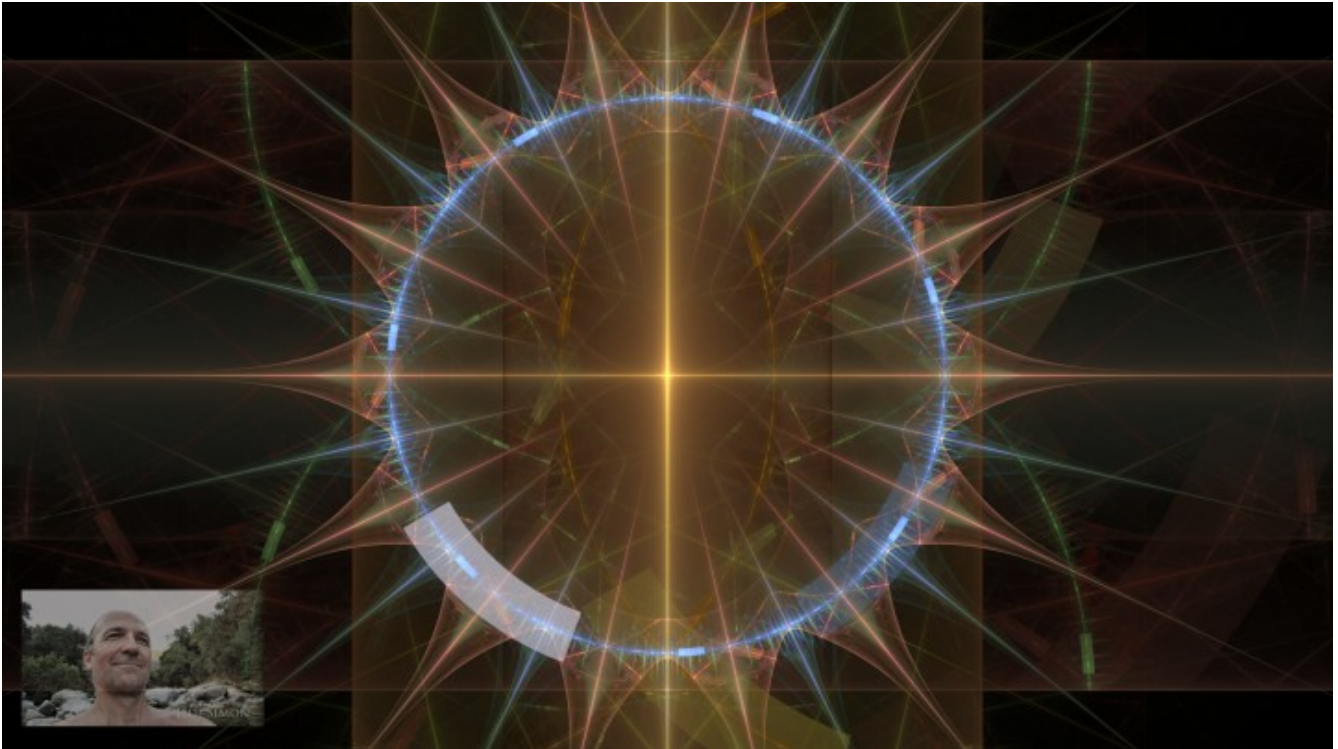


FORMATION OF GANS WITHIN A MUSICAL FIELD.

THIS KIND OF GANS IS HARMONIZED. WATER, WILL SEEM DEPLETED, BUT IN REALITY, IT IS “INFORMED”.

THIS KIND OF GANS AND WATER COMES FROM THE INTERACTIONS OF ACTIVE FIELDS AND NOT PASSIVE ONES.

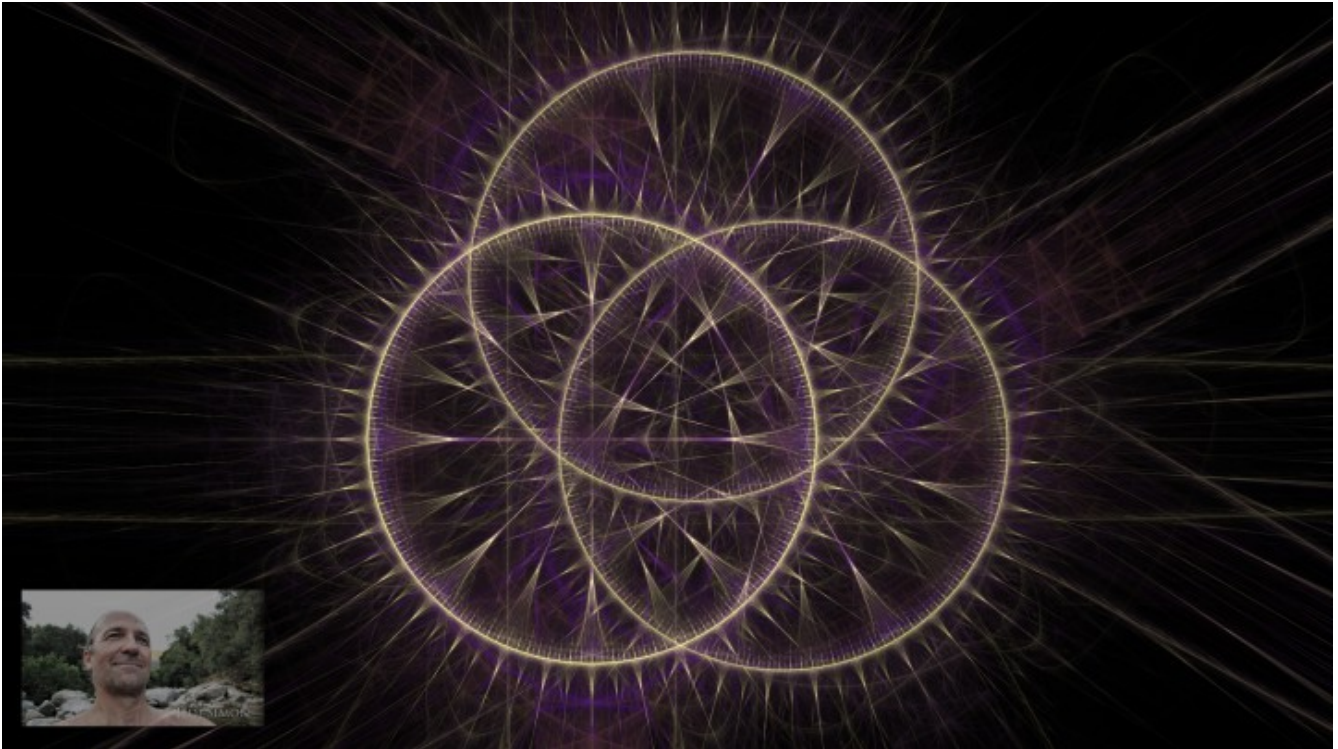
FIFTH ELEMENT IS AT WORK. CONSCIENCE AND ETHERIC FIELD, CREATING PLASMATIC SHAPE AND CONFIGURATION.



EXAMPLE OF ORDERED HARMONIZED GANS FIELD  
RESONANT PROPAGATION.



EXAMPLE OF DISORDERED SCALAR GANS FIELD  
NON RESONANT PROPAGATION.



EXAMPLE OF ORDERED POSITIONING, HARMONIC  
RESONANT EMANATION. INTERACTION OF 3 FIELDS.

TRIQUETRA.



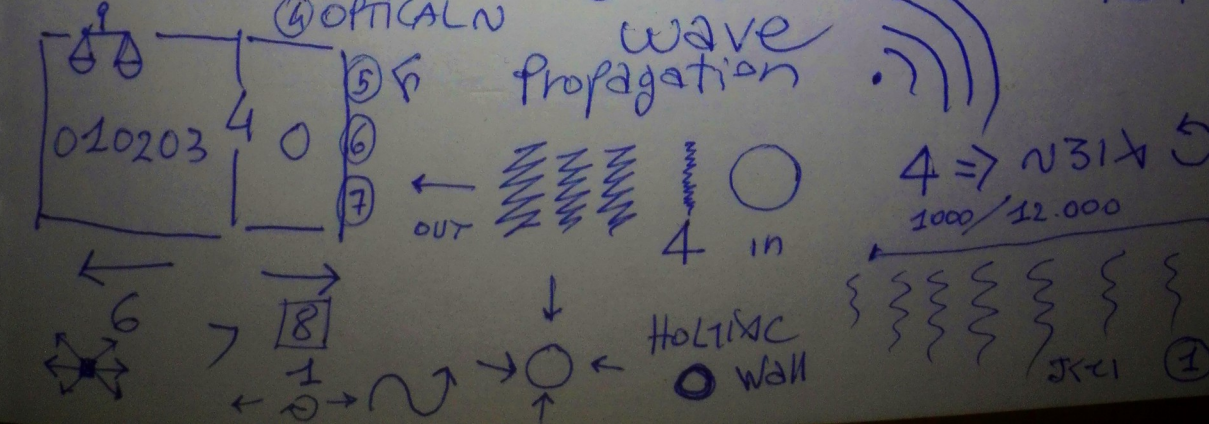
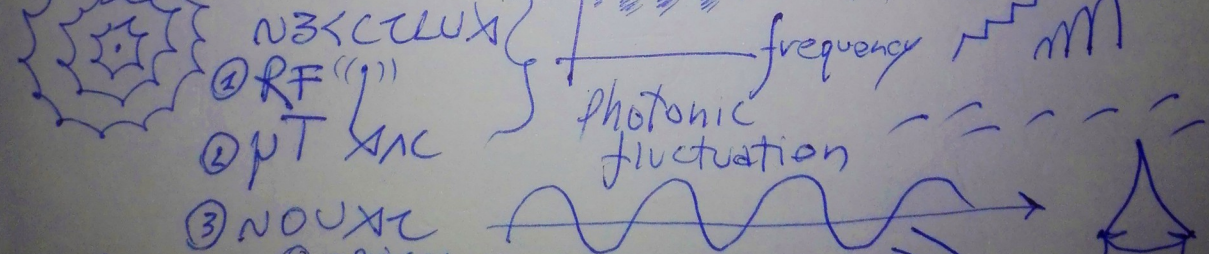
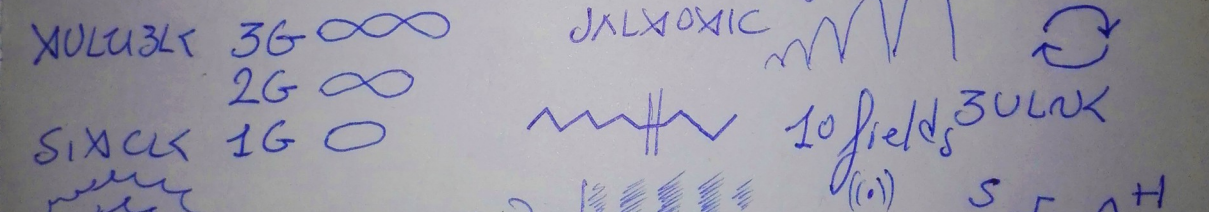
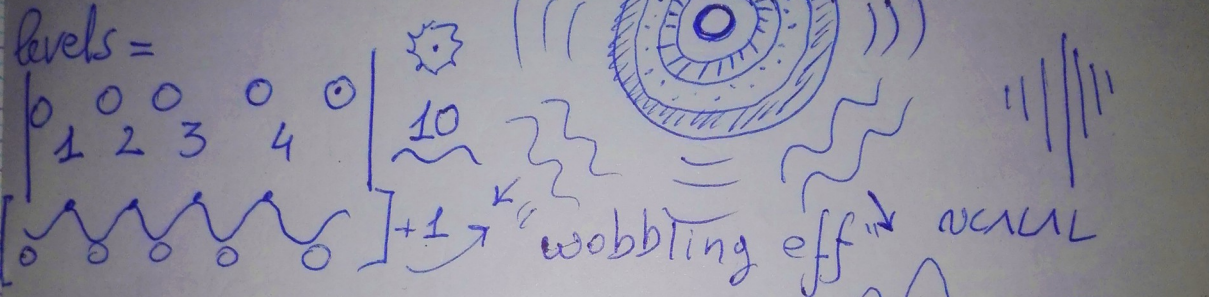
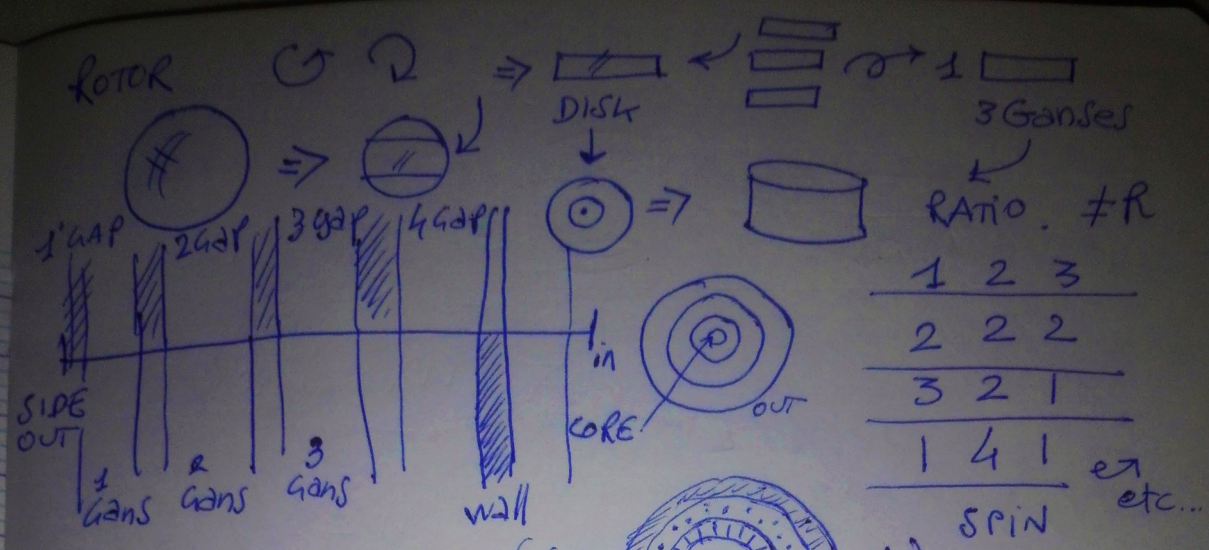


DUAL FLUX. DOUBLE FLUX REALITY. IN AND OUT AT THE  
SAME TIME. HARMONICAL EQUILIBRIUM. PULSATING  
MULTIVERSE IS ACTING AS A STATIONARY WAVE. FLOW, IS  
NON STRICTLY POTENTIAL DEPENDANT. ENERGY, IS. THE  
FORCE, IS NOT. THE FORCE ACTS IN EQUILIBRIUM.

THIS IS PRESENCE. CONSCIENCE.



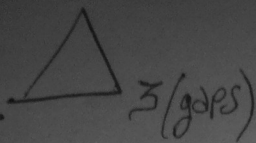




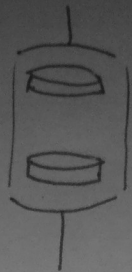
R (weight) type (CO<sub>2</sub> CH<sub>3</sub>CO etc...)

quantity

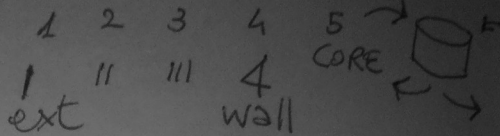
Ratio 1/3



single disks  
or. 1



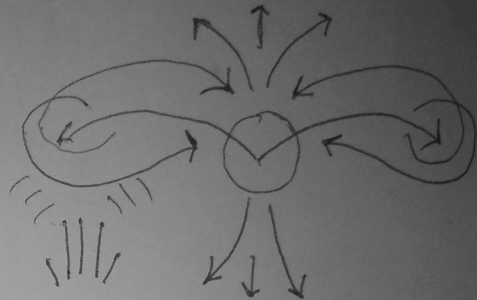
5 GAPS



NIXZLO3J1

3LIXC13LK

1 ⇒ 2 + 3 gaps  
2 ⇒ 3 + 4 gaps  
3 ⇒ 4 + 5 gaps



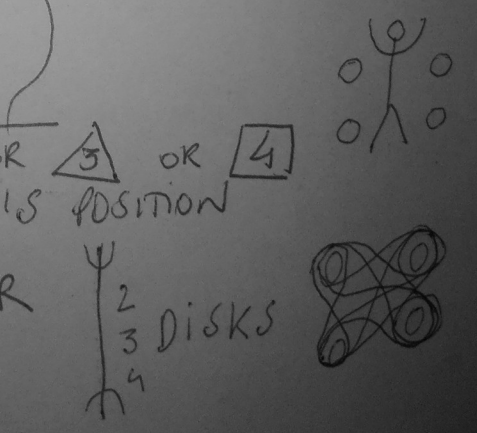
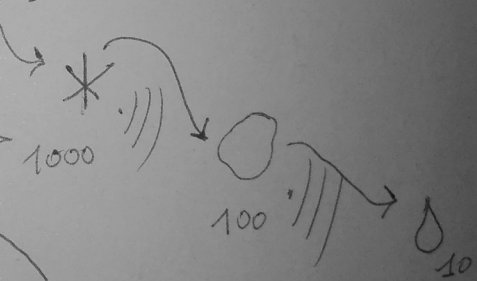
Resonating Spaces  
ROTOR

FRICION

Potentials

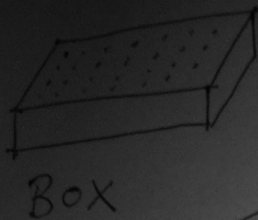
- 1 GANSES (kind) 0 0 \*
- 2 QUANTITY
- 3 QUALITY
- 4 RATIO 1/2 1/3 1/4 10.000
- 5 DYNA SPIN
- 6 XYZ POSITION
- 7 RESONANT WAVE
- 8 DIRECTION. 1D 2D 3D
- 9 ANGLE OF PENETRATION
- 10 EMANATION = ((.)) FIELDS
- 11 SHAPE OF THE STAR ① OR ② OR ③ OR ④
- 12 COORDINATES 0 N E AXIS POSITION
- 13 TIME DAY HOURS
- 14 CHORD HARMONIC // SCALAR
- 15 ACTIVE / PASSIVE FIELDS
- 16 PERSONAL INFORMATION

Multiple disk



"DIAPASON SYSTEM" 0 (.1) 0

JCU ②

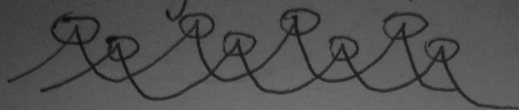


XIXOWILK 40 DAYS / 40,000

≠ potential ⇒ NODES e e e e

wave function peaks

e e



QUANTUM well eff.

PROBABILISTIC DISTRIBUTION

↓  
QUANTUM cymatics CONFIGURATION

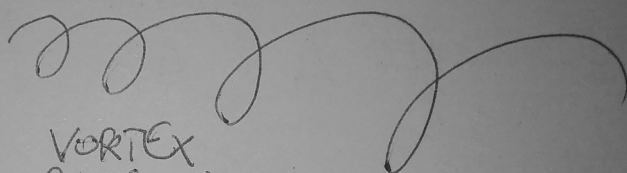
« MAP »

⇔ QUANTIZED ENERGY LEVELS

Resonant knots  
NODAL POINTS

≠ POTENTIAL FLOW

SHIATSU  
NADI



VORTEX  
PHYSICS

"Linearity and angularity are disengical"

"DISSIPATION"

OVERUNITY

"HEAT" "ENERGY LOSS"

YOU FOLLOW THE RIGHT PATH.

"NOT MOVING IN THE NATURAL way"

"DHARMA"

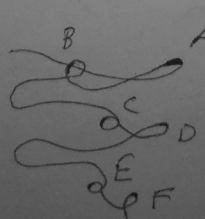
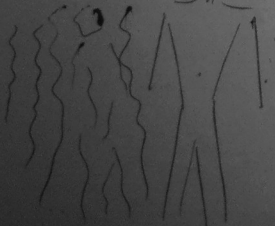
← KARMA "KAPAGEN" "KAPAWADZE" →

SPECIFIC COILS AND "DESIGN" OFFER "1200%+"

"RODIN

3021

COAXIAL COILS



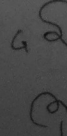
FREQUENCY = TOUCH

RESONANT

Infra RED  
frequency

XIX  
30X

XIX



MAG

FIELD

HS  
Heat

HARMONIC  
Jedi (3)

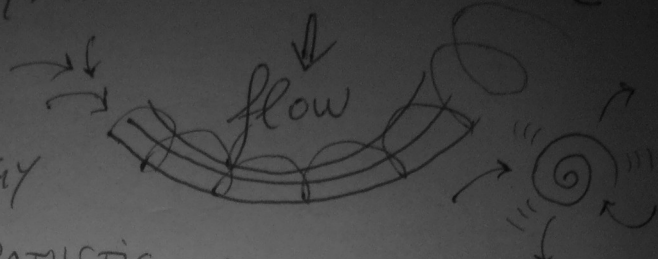
MAGIC BOX.

3 RESONATORS



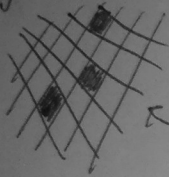
FREE ENERGY

# SYMPATHETIC RESONANCE



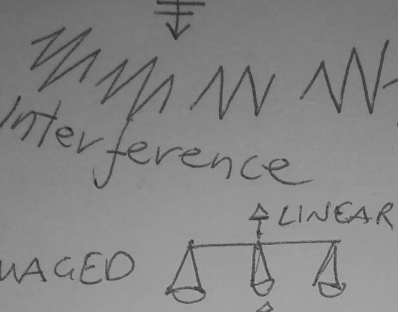
TUNING SPARKLE

Texture Pattern field

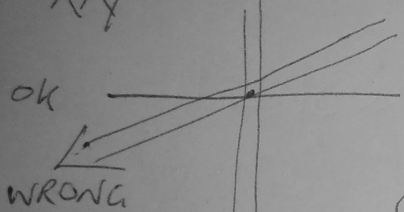
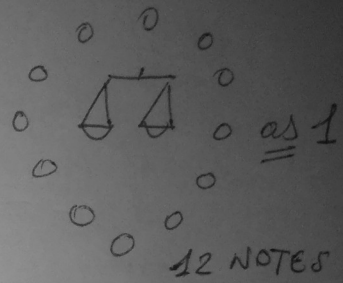


NON SYMPATHETIC

Interference



BURN OUT

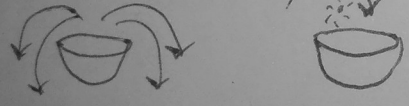


LINEAR



PLANAR EQUILIBRIUM

"Depleted"



so you need DYNAMIC FLOW CONTROLLERS TO HOLD RESONANCE

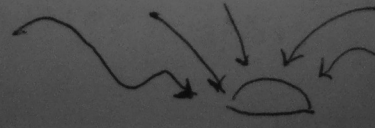
(POINTS 1-10 on ROTOR)

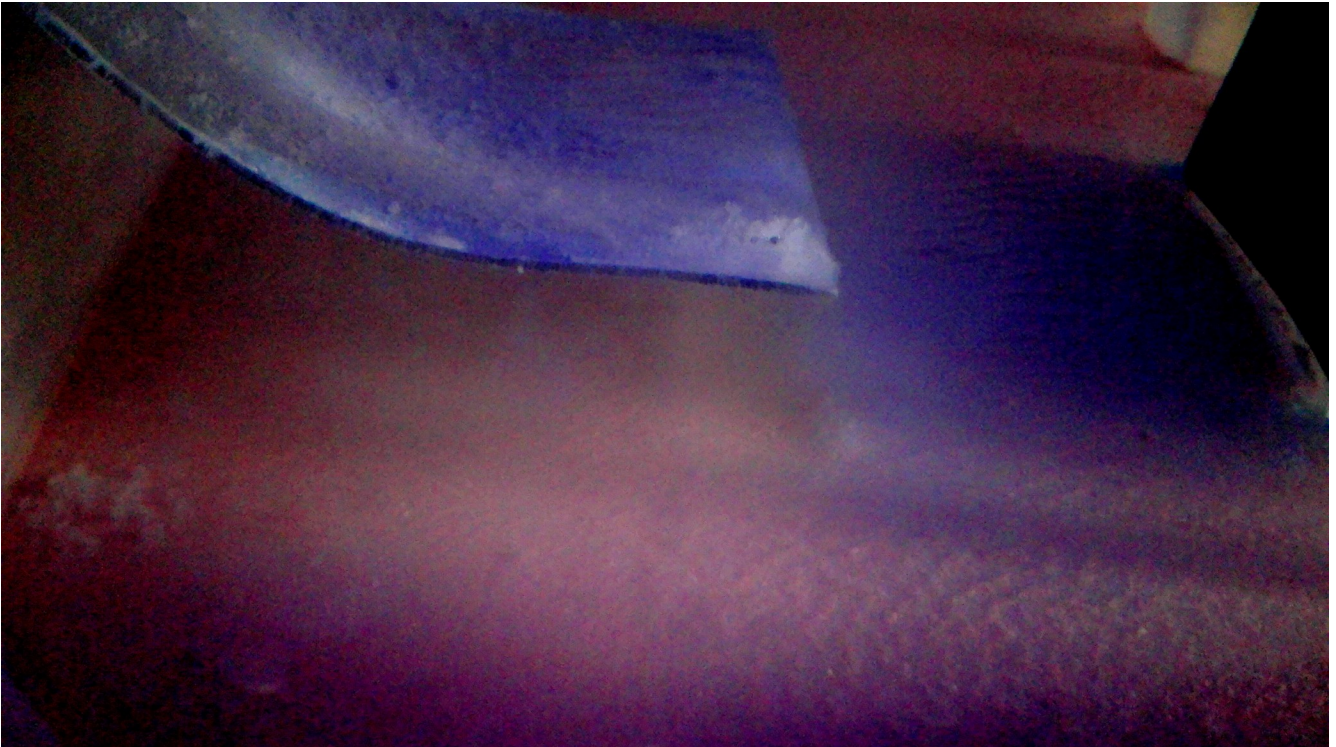
[MATTER STATE] OR (go AIR) "PURE FREQUENCIES"

Tuning keys

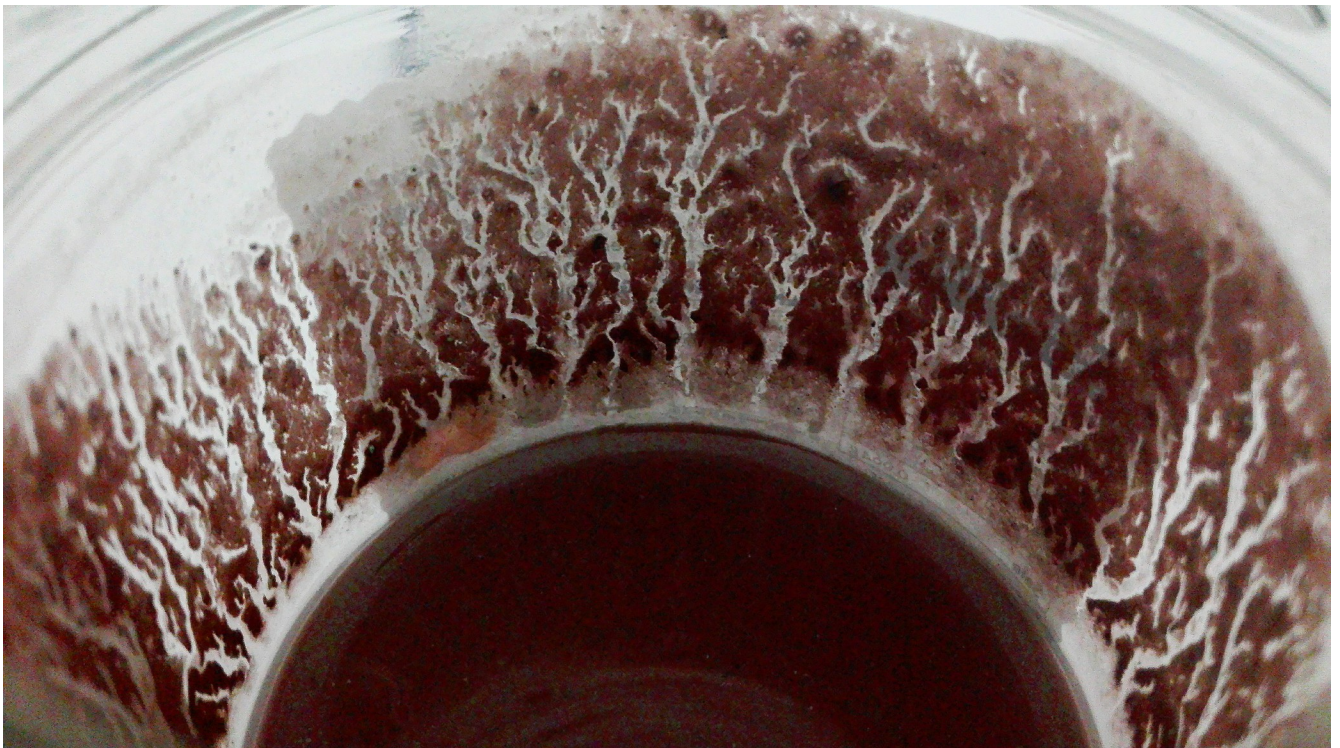
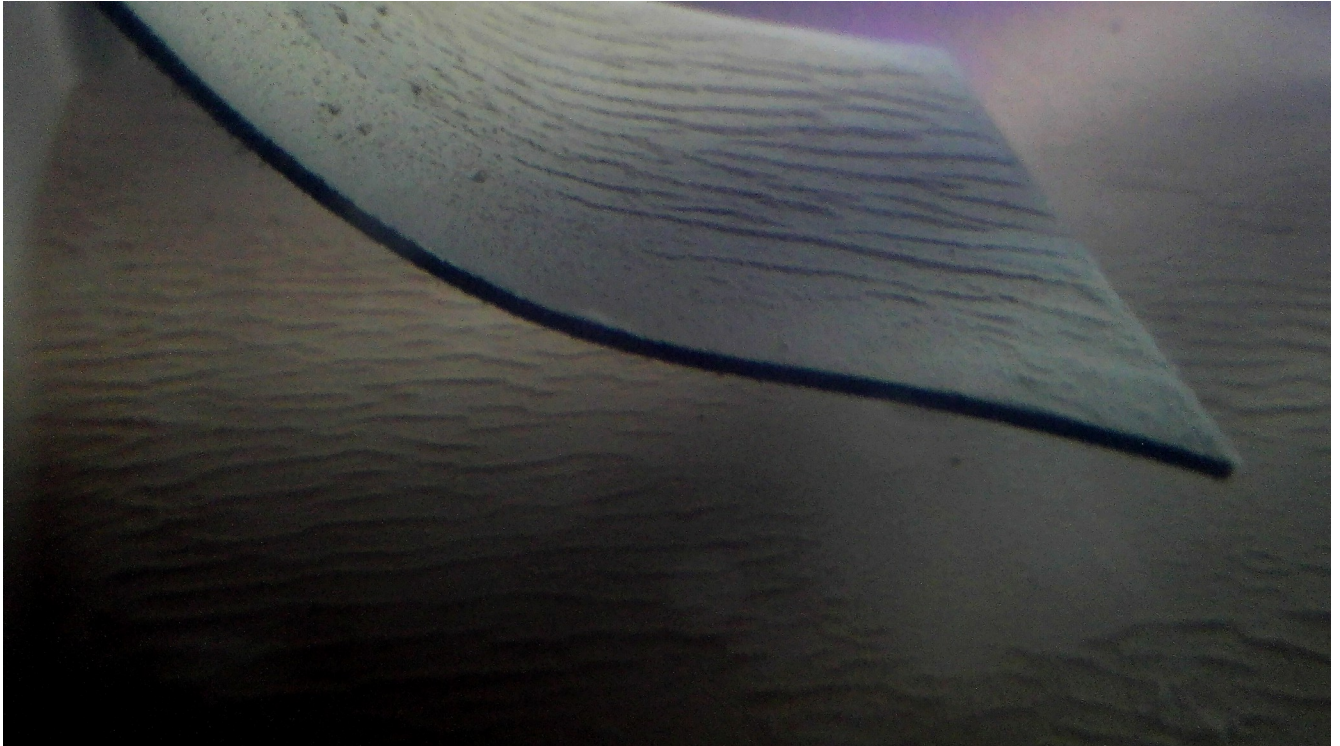
+ Spin + Position + quantity of gans + angle + control of external fields:

Dampening field OR interaction Adj. static fields # are dynamic!!!

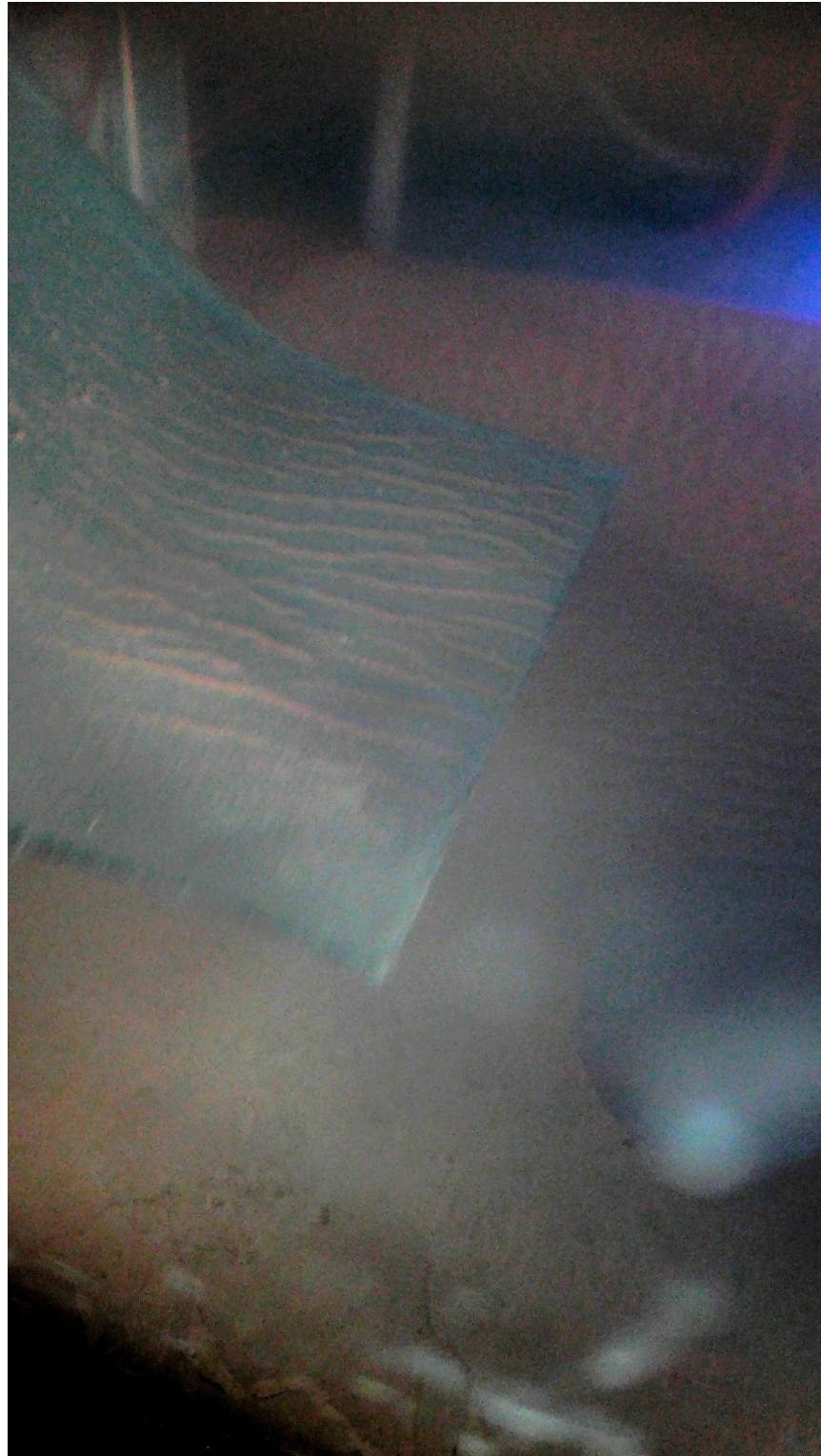




NORMAL PRODUCTION VS HARMONICAL



## ORDERED POSITIONING OF FIELDS

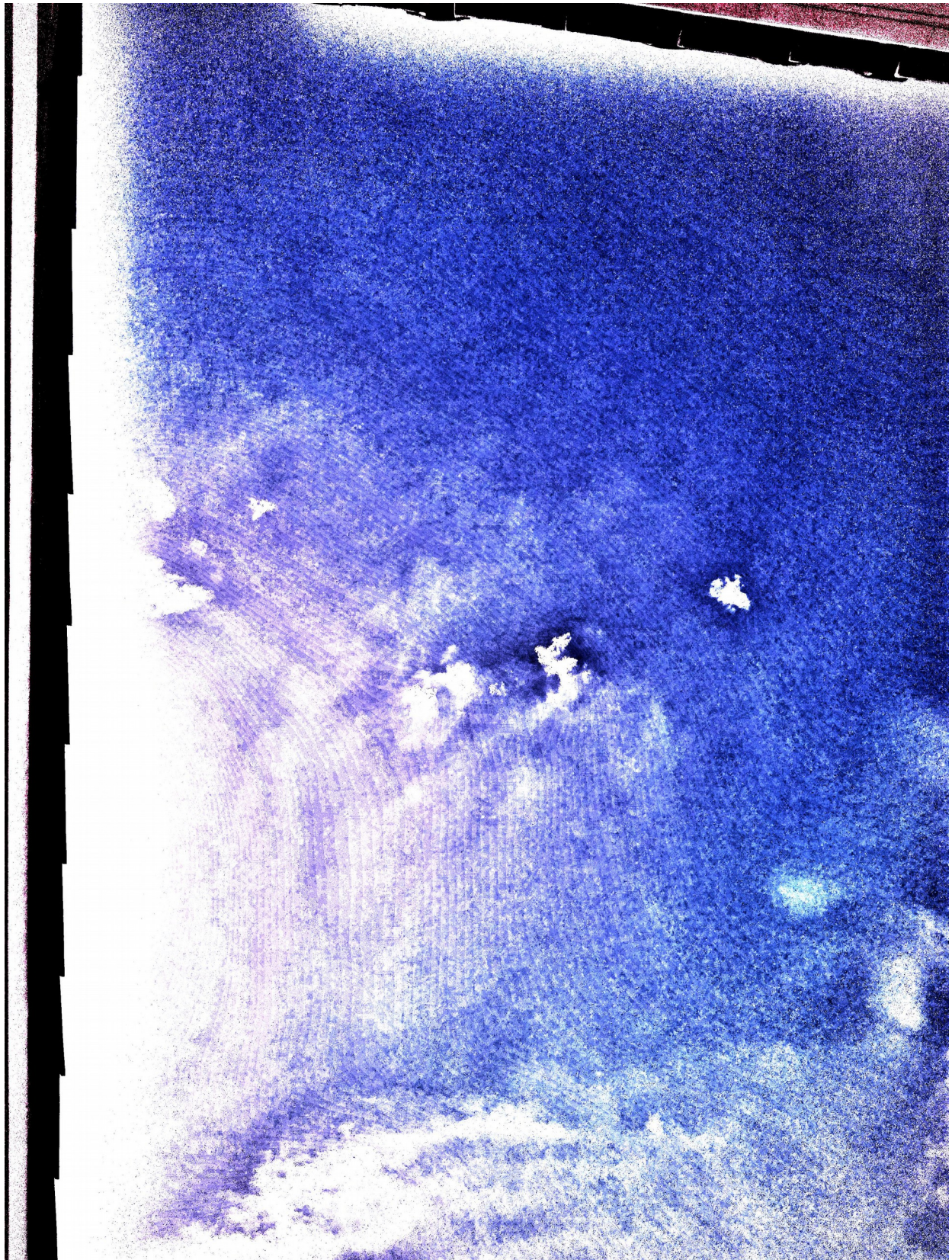


NATURAL SAND VAVE CONFIGURATION

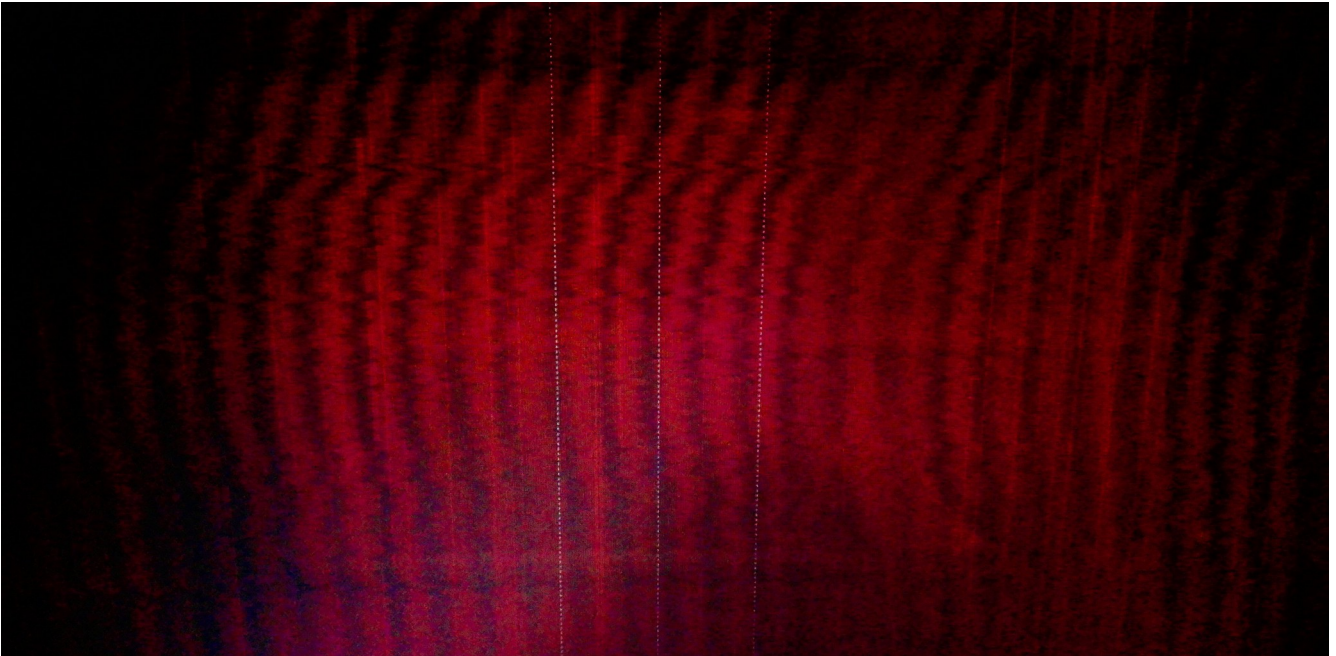




APPARENTLY BLUE NATURAL SKY

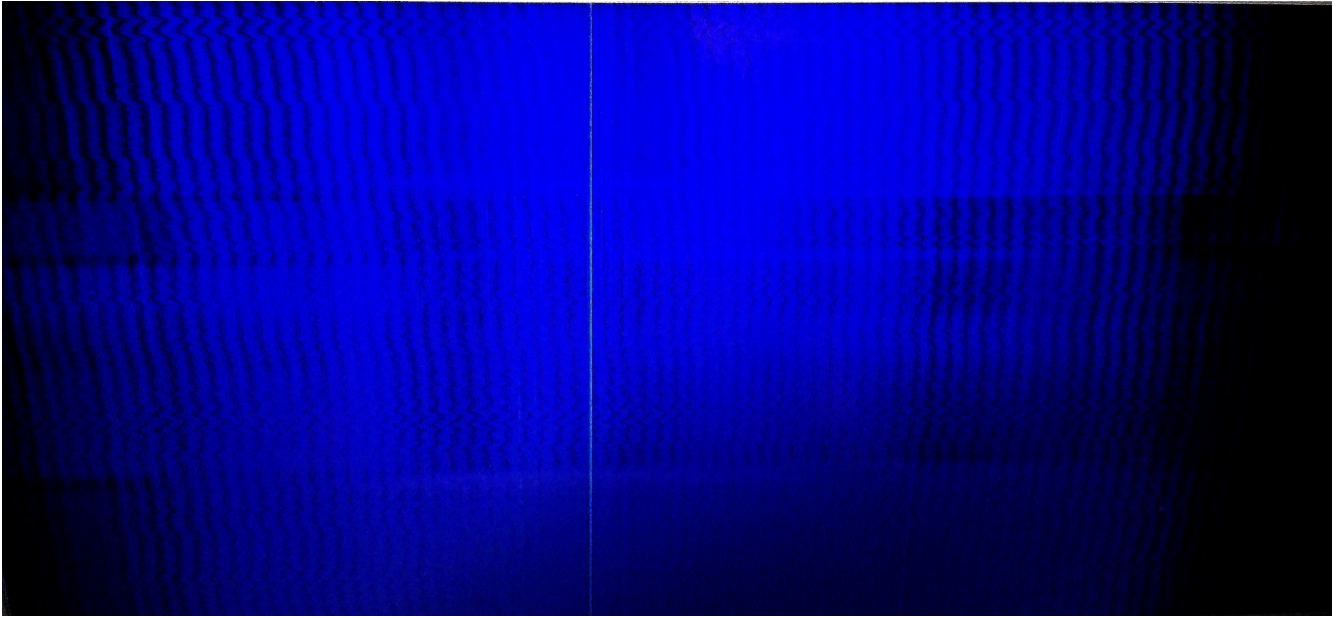


## SCALAR WAVE FIELD

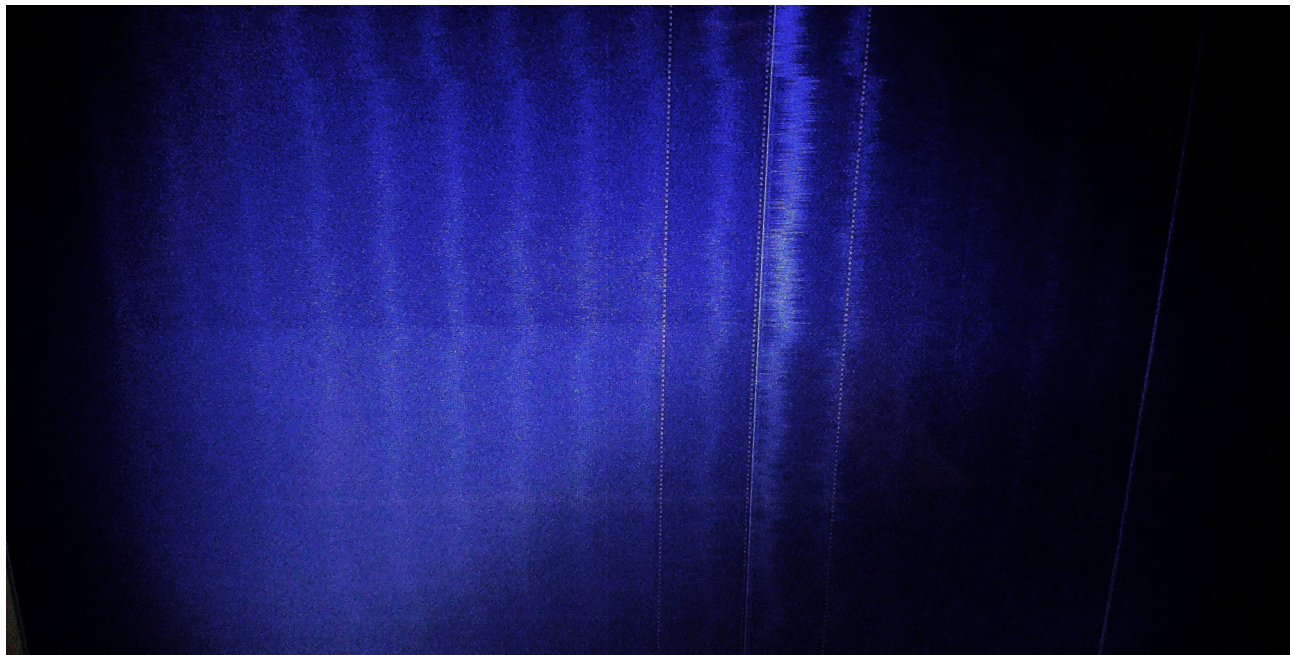


THIS IS THE ENERGY FIELD FINGERPRINT PRESENT AROUND  
SPINNING, PASSIVE, ACTIVE AND RESONATING REACTORS.

HERE YOU CAN SEE THE SCALAR PROPAGATION.

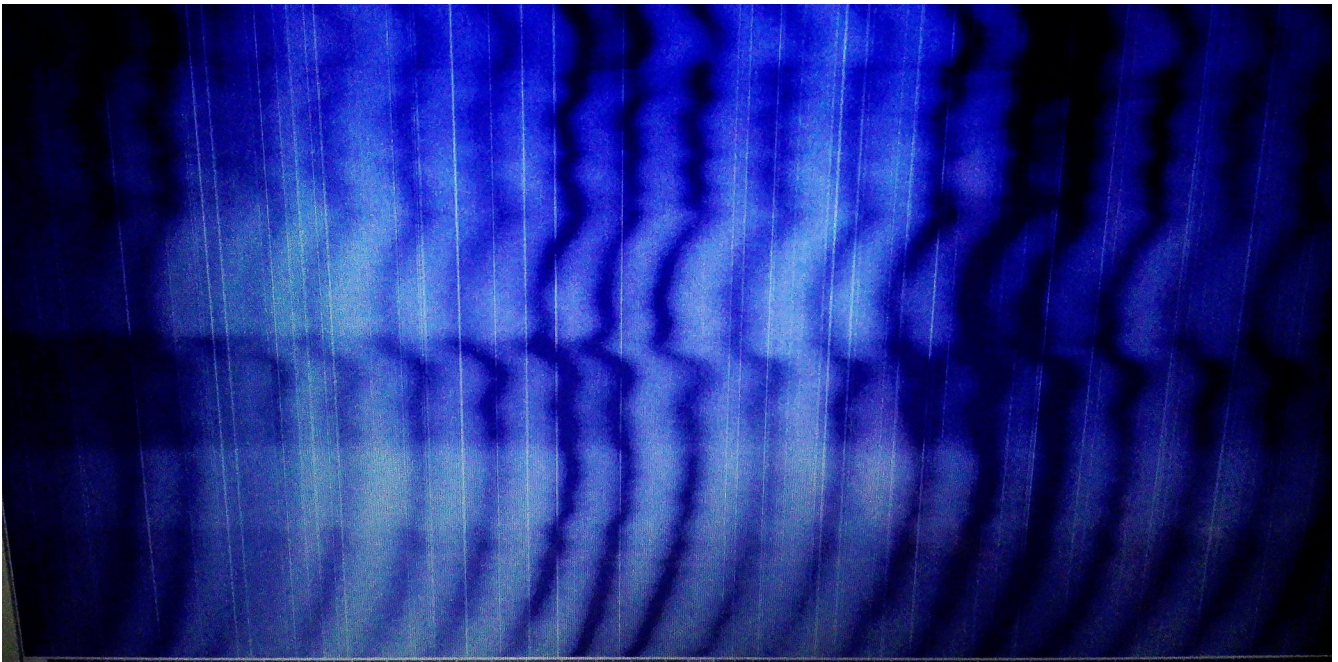


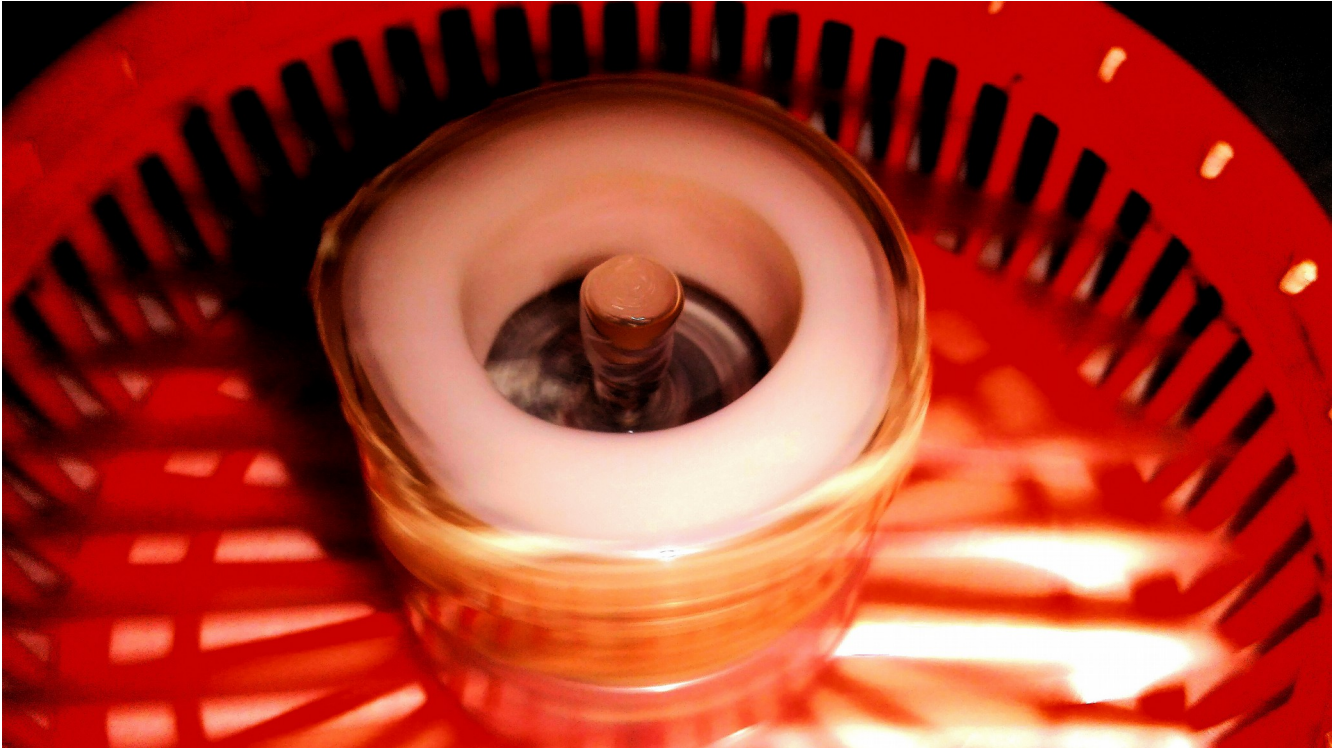
WIDE FIELD SPECTRUM PROPAGATION.



CENTRAL TUNING FREQUENCY AND LOWER SCALAR  
FLANGING PROPAGATION.

FINGERPRINT OF A SPINNING REACTOR. SCALAR  
PROPAGATION AND HORIZONTAL LINES, GENERATED BY  
INTERACTION OF SECONDARY FIELDS IN THE FLOW.





ETHERIC RE-CONFIGURATION OF THE FIELDS.  
LIGHT FIELD DISTORTION PROPAGATION EFFECTS.  
ELECTRO MAGNETIC GRAVITATIONAL CHANGES AND  
TEMPORARY LOSS OF COHERENCE OF MATTER.  
FLUID FIELD PHOTONIC RESONANT STATE INTERFERENCE.  
SHAPESHIFTING EFFECT.







SHAPESHIFTING 2

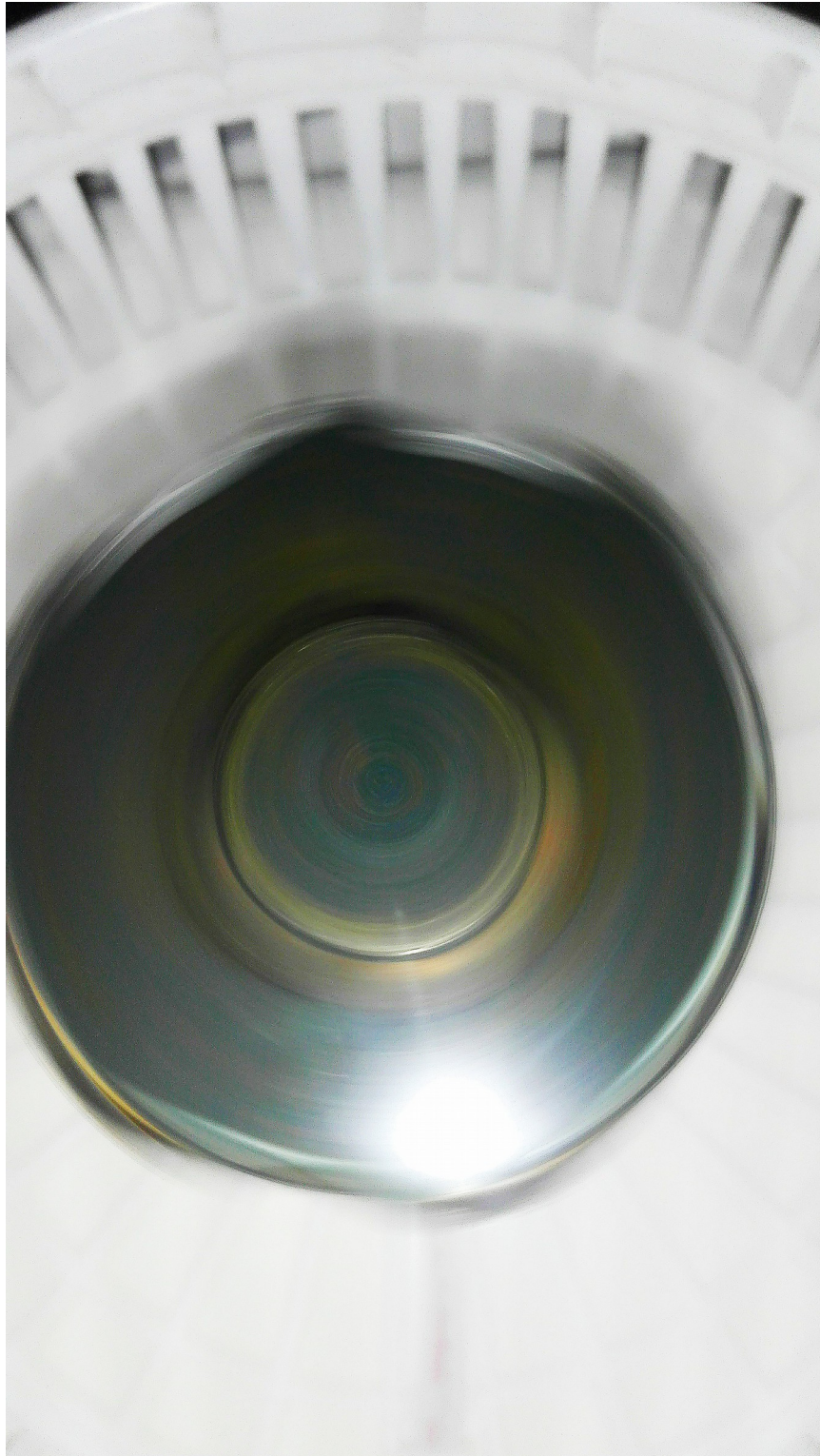


SHAPESHIFTING 3

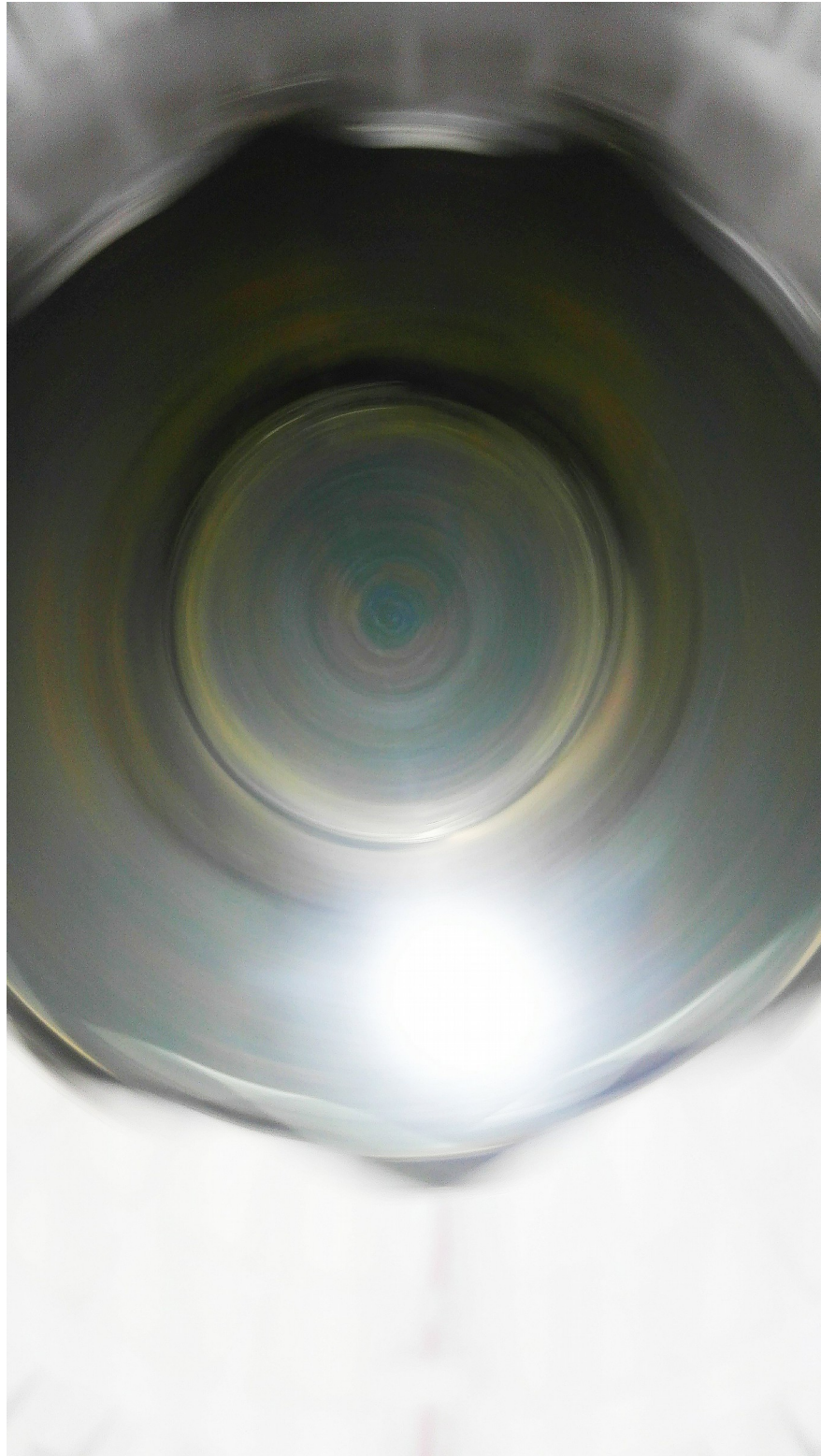




SHAPESHIFTING 4



SHAPESHIFTING 5



SHAPESHIFTING 6



# SHAPESHIFTING TRANSMUTATION OF MATTER





MANIFESTATION OF THE KING OF LIGHT



JEDI SIMON

[www.jedisimon.com](http://www.jedisimon.com)

Acqua di Luce

All rights reserved. Jedi research. 25 OCT 2018